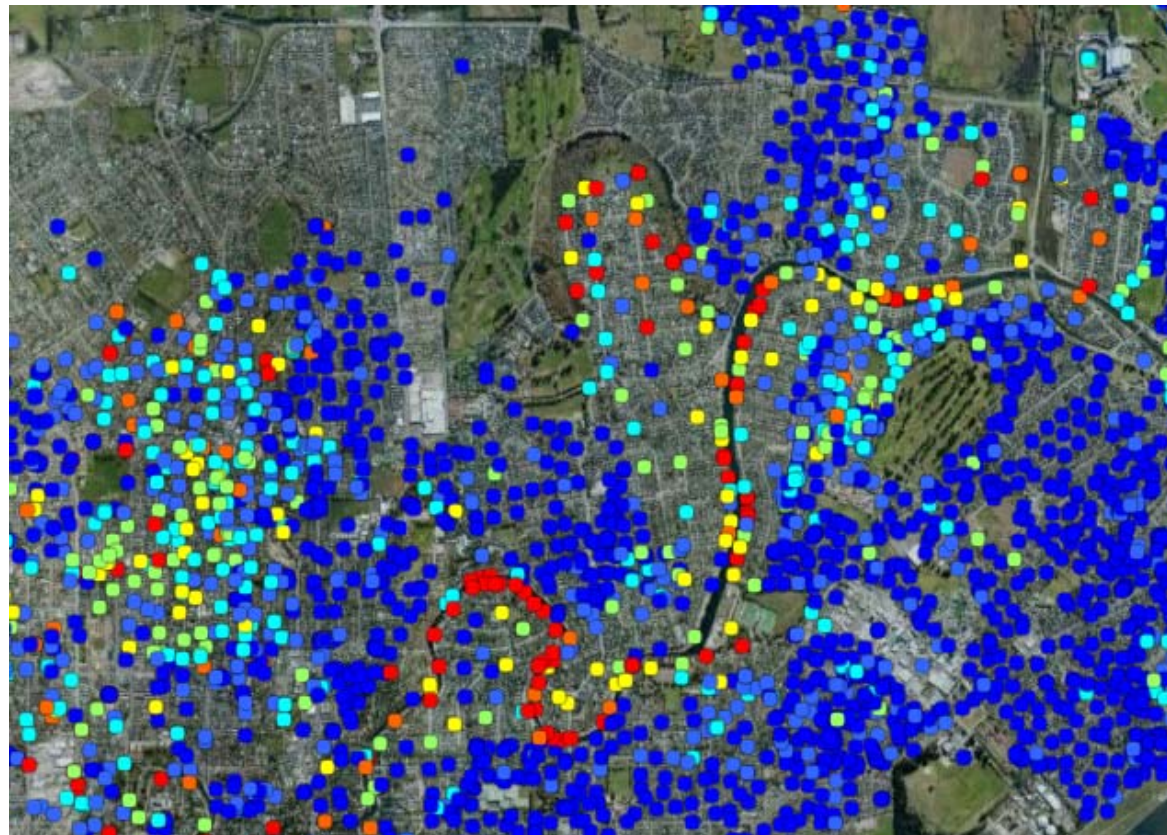


Canterbury Geotechnical Database

New layers and other matters

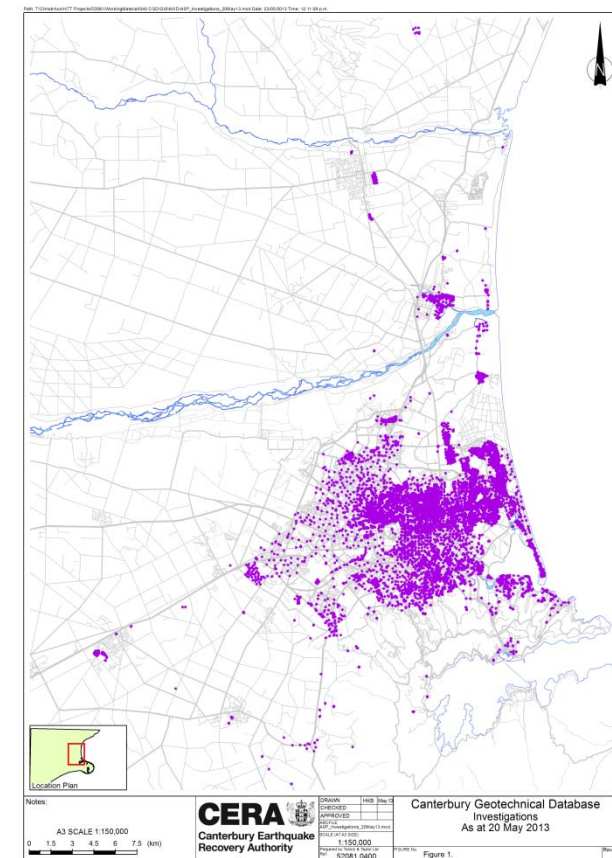




Composition of CGD data

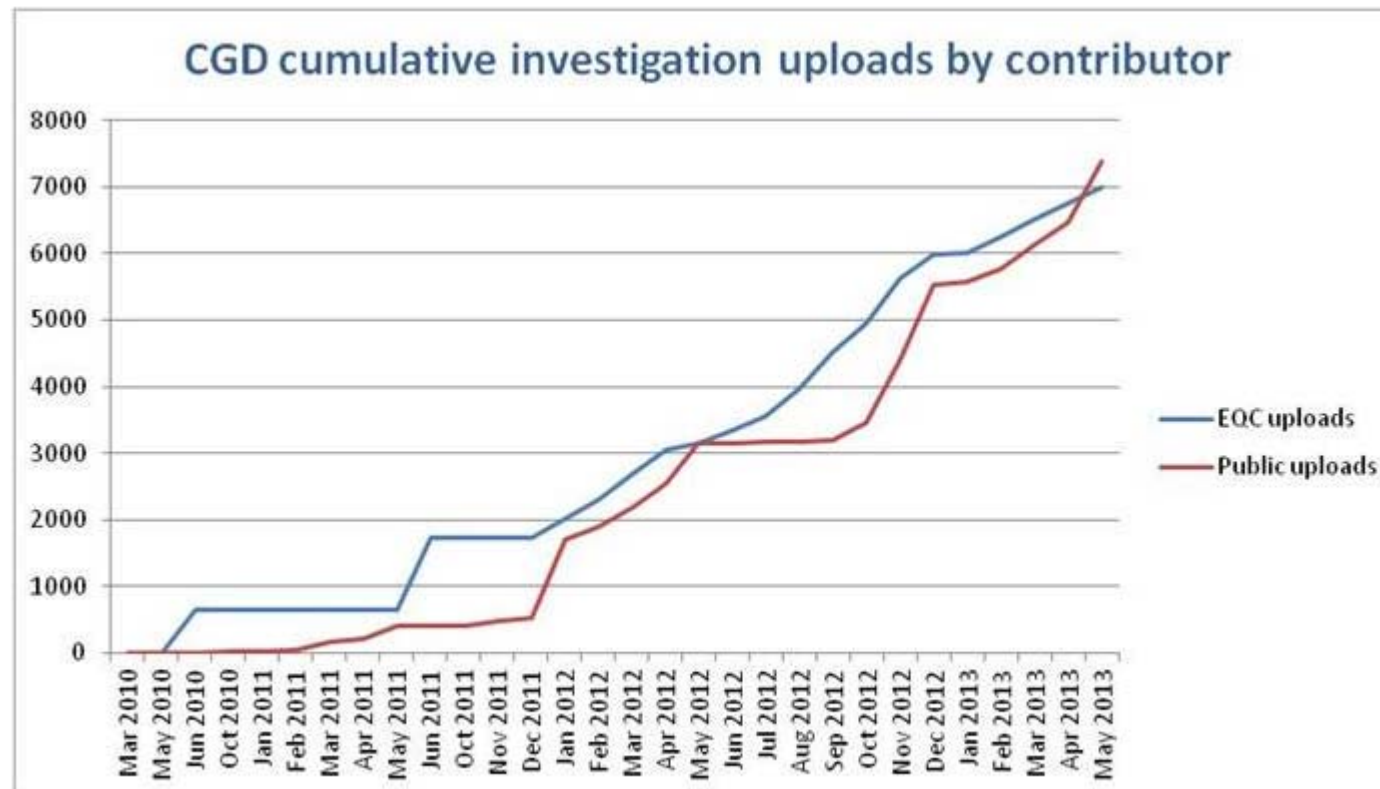
Type	Count of Investigation Type
Borehole	1915
CPT	8232
HandAuger	1008
HandAugerScala	1123
Other	41
Scala	1911
SWS	5
TestPit	159

Uploads	
EQC	Public
7005	7389





Rate of Data Addition



New layers

1. CPT Layer Analysis and Depth of Refusal
2. Liquefaction evaluation of CPT investigations
3. Soil Behaviour Type Index (I_c)

CGD Enhancements

Data Upload Form

1. Project Client
2. Ground improvements
3. Known issues – free field box
4. Property summary sheet enhancements



CGD Quality issues

- Investigation location coordinates are not accurate within reasonable bounds
- Groundwater observations not being entered
- Ground level entered is not accurate within reasonable bounds
- Uploaded data files are not complete, or are not in a readily useable format
- Multiple investigations being uploaded in a single log
- Quality guidelines have been issued for comment via our Newsletter



The future

1. Building consent applications
2. AGS4 – Form for trial then implementation
3. Laboratory and SPT data
4. CGD life post CERA (April 2016)
5. Consultation with stakeholders
6. Looking to set up a reference group
7. Appreciate any feedback you have on the database – benefits it provides etc